



## All Scaffolds will be assembled and used under the direction of a “competent person” and in accordance with Company Policy as outline under Project Safe Section I of the Specific Safety Rules of this program

# Scaffold Selection and Inspection

- Two Types of Scaffolds Web-tex and J-line
- Look over your scaffold carefully — when select a scaffold and each time before use. Look for missing, damaged or loose components.
- Make sure that working parts move properly and that all connections are secure.
- Carefully check components such as, boards, braces, screw jacks and base plates.



## Care & Maintenance

- Keep scaffolds in good condition.
- Clean spills or drips before erecting or dismantling the scaffold.
- Store scaffolds and its components out of the reach of other trades
- Protect scaffold members from damage, weather and corrosive materials.

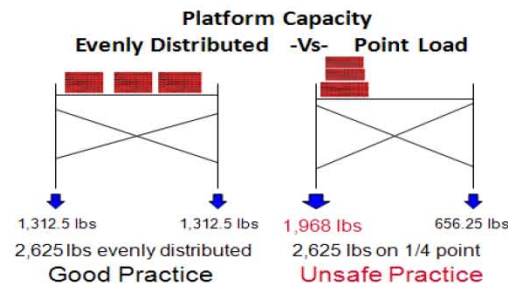
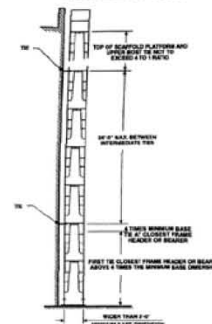


## Safety Before You Climb

- J-line scaffold will be the scaffold of choice and are to be used in all operations unless specific jobsite conditions make it impractical.**
- Maintain a 10ft clearance if there is even a remote possibility of working near electricity or overhead power lines.
- NEVER** use unstable objects such as barrels, loose bricks, buckets or blocks to support the scaffold frames or decking.
- Scaffold footings must be stable and capable of supporting the intended load without shifting.
- A proper guardrail system must be used on all scaffold platforms **6 feet** for J-line and **4 feet** for web-tex.
- The height of freestanding mobile scaffold shall not exceed four times the minimum base dimension. J-line **16 feet** and web-tex **8 feet**.
- Scaffolds shall be capable of supporting four times the maximum intended load.



MAXIMUM VERTICAL TIE SPACING WIDER THAN 3'-0" BASES



## The “Right” Way to Use a Scaffold

- Work platform must be fully decked.
- All four wheels must be locked anytime the scaffold is in use and all pins such as X brace pins should be all the way down.
- Always lock and turn the wheels of the scaffold to the side to prevent movement when use on stairwell.
- Gravity pins will be used on all tubular type scaffolds.
- An employee may ride a mobile scaffold only if a second employee pushes the scaffold, the scaffold is fully guardrail, the employee is kneeling and the floor is free of debris and penetrations on the floor.
- Web-tex scaffolds are to be used only in confined spaces that make J-line scaffold impractical.
- Web-tex frames may only be double stacked when used in a confined area so that there is no danger of tipping over. In these instances, the scaffold must be secured to structure to prevent tipping over.
- If necessary the use of alternate means of fall protection will be taken to prevent the potential of falling.
- Marek scaffolds owned or rented are for employees only unless a liability waiver is signed in advance.



# The "Wrong" Way to Use a Scaffold

**DON'T** use a scaffold for which you have not been trained.



**DO NOT** use a scaffold that you have not personally inspected prior to start any work. **All defective and/or incomplete equipment should be tagged and removed from service.**



**DON'T** climb a scaffold if you are not physically and mentally up to the task.



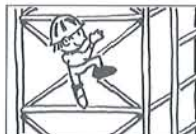
**DO NOT** use a scaffold if it is not fully planked.



**DON'T** exceed the Duty Rating, which is the maximum load capacity of the scaffold.



**DO NOT** use X braces to climb on to the scaffold



**DO NOT** carry materials or tools as you climb. Keep both hands on the side rails.



**DO NOT** self-propelled on any mobile scaffold. You could cause the scaffold to tip over and fall. **Climb down and then reposition the scaffold closer to your work!**



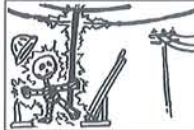
**DON'T** leave materials and equipment on the platform at the end of the day.



**DON'T** use an outdoor scaffold in stormy or windy weather or if it's covered with ice or snow.



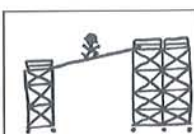
**DON'T** use, erect or dismantle any scaffold close to power lines without the approval of your supervisor. Maintain a 10 feet clearance at all times from power lines.



**DO NOT** use a scaffold taller than 4 times its minimum base unless it is secured to prevent tipping.



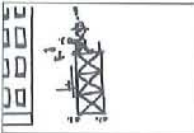
**DO NOT** bridge between towers with planks or stages unless the scaffold has been design by a qualified person (engineer)



**DO NOT** jump on to planks or platforms.



**DO NOT** use mobile scaffolds unless all the wheels are locked.



**DON'T** use narrow scaffolds such as (i.e. Web-tex, Baker, Perry, Sony, Gentex, etc) on open areas where J-line or Betco scaffold could be use.



**DON'T** stand or sit on guardrails. They are not designed to carry your weight



**DON'T** place ladders or any object that can become unstable on top of the scaffold.



**DON'T** block entrances or exits without posting signs barricades to aware traffic of work in progress.

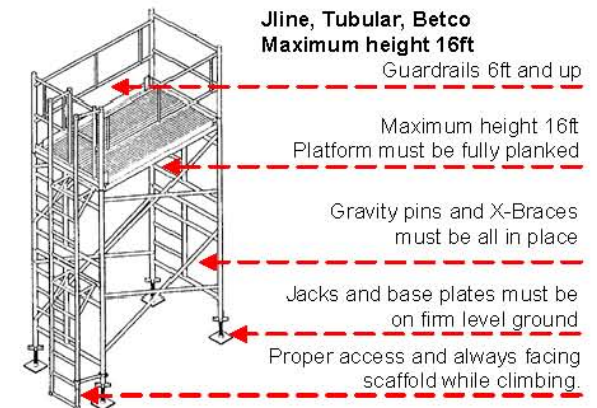
**DO NOT** move a mobile scaffold without looking down to see the hazards that are in your path while on scaffold.



**DO NOT** fabricate attachments to scaffolds, it is considered a modification



## SCAFFOLD DESCRIPTION



Guardrails 4ft and up

Maximum height 8ft  
Platform must be fully planked

Add additional trust if platform is 8ft or more to increase stability, **(check with your supervisor)**

Attach outriggers or secure scaffold to structure to prevent tipping over.

All mobile scaffolds must have all wheels locked prior to work



**Web-tex, Gentex, Baker, any narrow scaffold**  
Maximum height 8ft